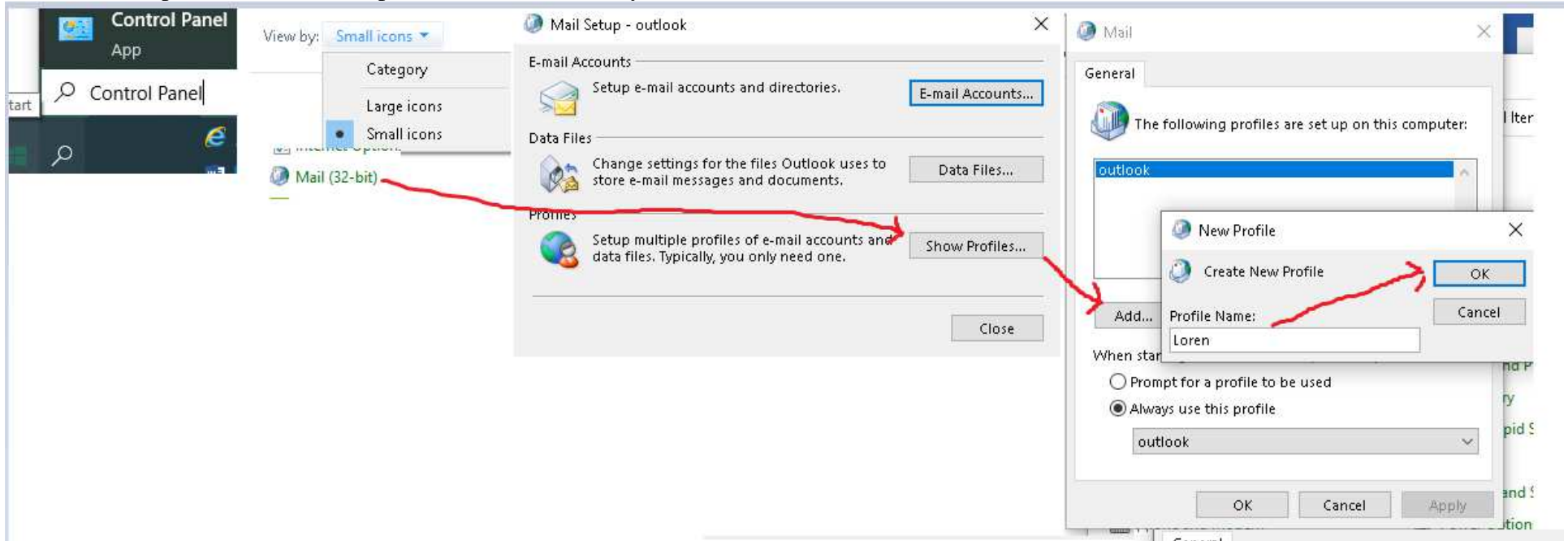


In the search box type **“Control Panel”** and open the app: **Choose “Small icons”** then **“Mail 32 bit”** Click **“Show Profiles”** then **“Add”** - Type your name (this is a private name for the profile and isn't used anywhere else) then click **OK**.



Fill in your name, email address & password, click **“Next”** Outlook should verify the connection & credentials; click **“Finish”**. Lastly, use the drop down by “always use this profile” and **select the new profile** that you created. Click **OK** & close any open windows; Open outlook, supply your credentials again if prompted.

